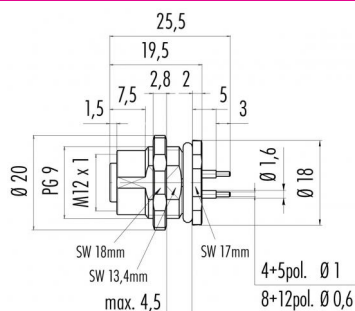


Product description	M12-B female panel mount connector, Contacts: 4, not shielded, dip-solder, IP68, UL, PG9, front mounting
Area	M12-B series 766
Order number	86 0534 1000 00004

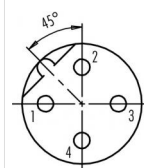
Illustration



Scale drawing



Contact arrangement (Plug-in side)



	X	Y
1	-2,50	0,00
2	0,00	2,50
3	2,50	0,00
4	0,00	-2,50

- 1 brown
- 2 white
- 3 blue
- 4 black

You can find the assembly instructions on the next page.

Technical data

General values

Notice

Please note that, due to the change from the old to the new order number, there may be deviations in the technical specifications. For questions about product details, please use the 'Contact Customer Service' form on the right.

Connector design
Connector locking system
Termination
Upper limit temperature
Lower limit temperature
Customs tariff number
Packaging Unit

female panel mount connector
screw
dip-solder
85 °C
- 40 °C
85369010
20

Cable data

Approval 1

UL

Electrical values

Rated current (40 °C) 4 A
Rated voltage 250 V
Rated impulse voltage 2500 V
Pollution degree 3
Overvoltage category II
Insulating material group II
Insulation resistance > 10⁸ Ω
EMC compliance not shielded
Degree of protection IP68
Mechanical operation > 100 Mating cycles
Contact length 6.0 mm

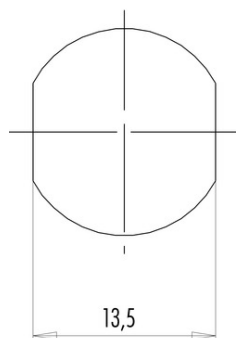
Material

Contact material CuSn (bronze)
Contact plating Au (gold)
Contact body material PA
Housing material Zinc die-cast nickel-plated
REACH SVHC CAS 7439-92-1 (Lead)

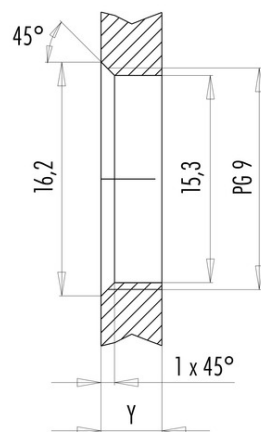
Product description	M12-B female panel mount connector, Contacts: 4, not shielded, dip-solder, IP68, UL, PG9, front mounting
Area	M12-B series 766
Order number	86 0534 1000 00004

Assembly instructions / Panel cut-out

Mit Fläche als Verdrehschutz



Mit Durchgangsbohrung



Einbaurichtung: O-Ring sitzt an Fase.

Anzugsdrehmoment

Metallgehäuse	6,25 Nm
Positioniermutter	6,25 Nm

Gehäusewandstärke Y (mm)		
Ausführung	min (mm)	max (mm)
Hinterwandmontage	2	3,5
von vorne verschraubbar	2	4,5
positionierbar ¹⁾	2	3,5
Schraubklemmanschluss	2	3,5
Gewinde M12 x 1	2	3,0
Gewinde M14 x 1 ²⁾	³⁾ 1,5/ ⁴⁾ 2	6,5

Hinweise

- ¹⁾ Keine Fase anbringen
- ²⁾ Wandstärken:
bis 1,5 mm Kontermutter 01-5385 verwenden,
>1,5 mm Gewinde schneiden
- ³⁾ Mutter
- ⁴⁾ Gewinde in Gehäusewand

Product description	M12-B female panel mount connector, Contacts: 4, not shielded, dip-solder, IP68, UL, PG9, front mounting
Area	M12-B series 766
Order number	86 0534 1000 00004

Security notices

The connector must not be connected or separated under load. Non-observance and incorrect use can result in personal injury.

The connectors are designed for use in plant, control system and electrical equipment. The end user is responsible for checking whether the connectors are suitable for use in other applications.

Connectors with degree of protection IP 67 and IP 68 are not suitable for use under water. When used outdoors, the connectors must be separately protected against corrosion. For further information about IP degrees of protection refer to 'Technical support' in the Download Centre.